

ALKON®

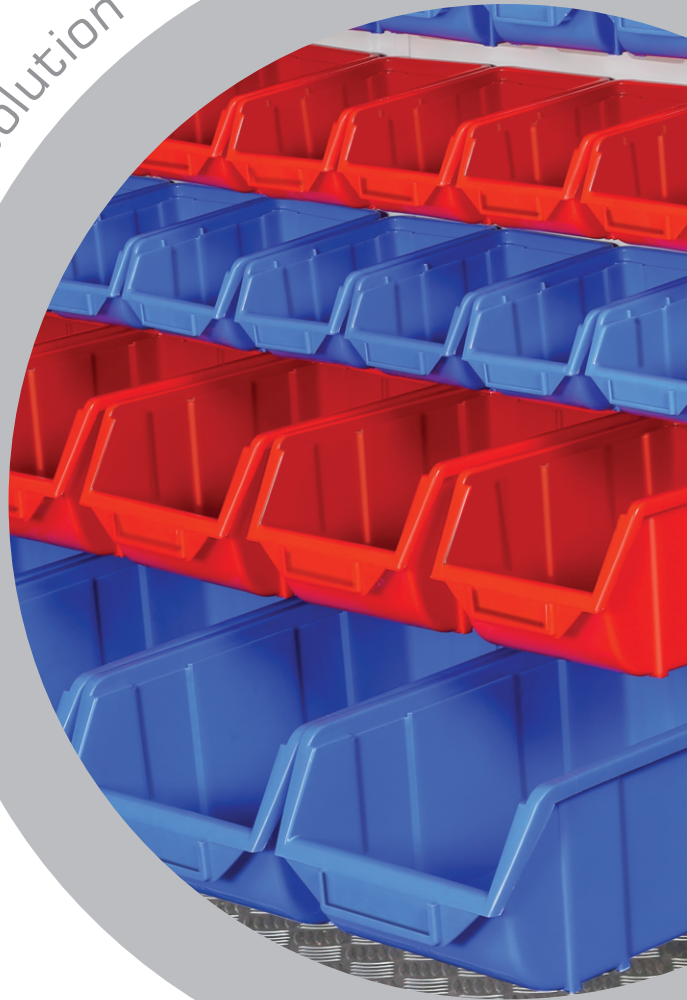
PRODUCT CATALOG 2025-26

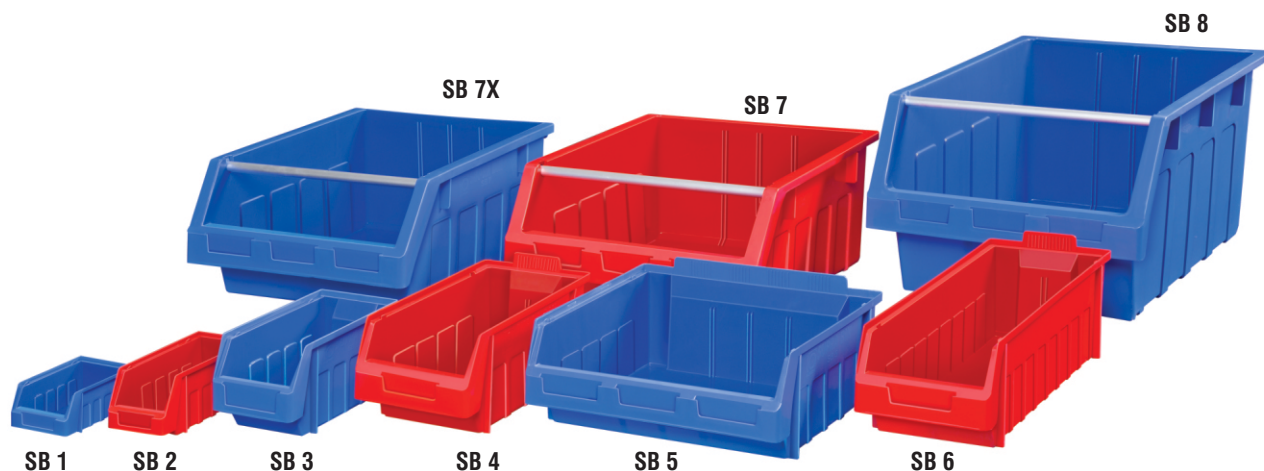


- SUPRA BINS
- RHINO BINS
- HIPPO BINS
- TOTE BINS
- BULL BINS
- KOALA BINS
- MAMMOTH BINS

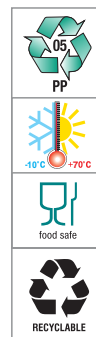
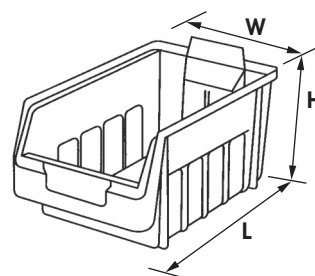
Material Handling Bins

The right storage solution for every need





- **Made From Polypropylene Copolymer.**
- Strong rear lip for use with Louvre Panels or Rails (Except for SB 7, SB 7X & SB 8).
- Strong heavy duty reinforced base, sides & stacking rim.
- Resistant to most industrial solvents.
- Bins are designed to stack one on top of each other.
- Clear access to contents.
- All bins with identification card holders.
- Stopper prevents stacked bins from shifting forward.
- Incorporates a safety stop feature in SB 4 / 5 / 6 at the back for use on shelves.



Art No	: SB 1
Outside Dimensions in mm	: 125 (L) x 98 (W) x 60 (H)
Inside Dimensions in mm	: 117 (L) x 80 (W) x 52 (H)
Effective Height in mm	: 25
Standard Packing	: 60 pcs. per ctn.
Volume Per Box CBM	: 0.0458
Slots for Partition	: NA
Colour	: Red / Blue



Art No	: SB 2
Outside Dimensions in mm	: 170 (L) x 95 (W) x 84 (H)
Inside Dimensions in mm	: 157 (L) x 80 (W) x 75 (H)
Effective Height in mm	: 40
Standard Packing	: 60 pcs. per ctn.
Volume Per Box CBM	: 0.0855
Slots for Partition	: NA
Colour	: Red / Blue



Art No	: SB 3
Outside Dimensions in mm	: 220 (L) x 130 (W) x 125 (H)
Inside Dimensions in mm	: 200 (L) x 115 (W) x 115 (H)
Effective Height in mm	: 73
Standard Packing	: 50 pcs. per ctn.
Volume Per Box CBM	: 0.1954
Slots for Partition	: NA
Colour	: Red / Blue

All dimensions in mm approx.



Art No : **SB 4**
 Outside Dimensions in mm : 290 (L) x 178 (W) x 143 (H)
 Inside Dimensions in mm : 265 (L) x 155 (W) x 130 (H)
 Effective Height in mm : 80
 Standard Packing : 10 pcs. per ctn.
 Volume Per Box CBM : 0.0786
 Slots for Partition : 3 Slots for Horizontal Partitions or
 1 Slot for Vertical Partition.
 Colour : Red / Blue



Art No : **SB 5**
 Outside Dimensions in mm : 290 (L) x 363 (W) x 145 (H)
 Inside Dimensions in mm : 265 (L) x 340 (W) x 130 (H)
 Effective Height in mm : 83
 Standard Packing : 5 pcs. per ctn.
 Volume Per Box CBM : 0.0786
 Slots for Partition : 3 Slots for Vertical Partitions.
 Colour : Red / Blue



Art No : **SB 6**
 Outside Dimensions in mm : 440 (L) x 180 (W) x 145 (H)
 Inside Dimensions in mm : 415 (L) x 154 (W) x 130 (H)
 Effective Height in mm : 85
 Standard Packing : 10 pcs. per ctn.
 Volume Per Box CBM : 0.1193
 Slots for Partition : 7 Slots for Horizontal Partitions or
 1 slot for Vertical Partition.
 Colour : Red / Blue



Art No : **SB 7**
 Outside Dimensions in mm : 435 (L) x 425 (W) x 215 (H)
 Inside Dimensions in mm : 405 (L) x 380 (W) x 208 (H)
 Effective Height in mm : 120
 Standard Packing : 6 pcs. per ctn.
 Volume Per Box CBM : 0.1175
 Slots for Partition : 3 Slots for Vertical Partitions.
 Colour : Red / Blue



Art No : **SB 7X**
 Outside Dimensions in mm : 435 (L) x 400 (W) x 215 (H)
 Inside Dimensions in mm : 405 (L) x 360 (W) x 208 (H)
 Effective Height in mm : 120
 Standard Packing : 6 pcs. per ctn.
 Volume Per Box CBM : 0.1148
 Slots for Partition : 3 Slots for Vertical Partitions.
 Colour : Red / Blue



Art No : **SB 8**
 Outside Dimensions in mm : 600 (L) x 425 (W) x 300 (H)
 Inside Dimensions in mm : 530 (L) x 375 (W) x 290 (H)
 Effective Height in mm : 170
 Standard Packing : 5 pcs. per ctn.
 Volume Per Box CBM : 0.1622
 Slots for Partition : 3 Slots for Vertical Partitions.
 Colour : Red / Blue

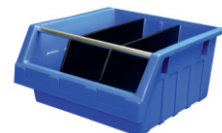
All dimensions in mm approx.



SB 4 with 1 No of VP SB 4/5



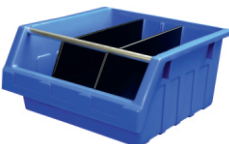
SB 4 with 1 No of HP SB 4/6



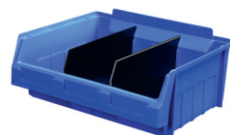
SB 7X with 2 Nos of VP SB 7



SB 6 with 1 No of HP SB 4/6



SB 7 with 2 Nos of VP SB 7



SB 5 with 2 Nos of VP SB 4/5



SB 8 with 1 No of VP SB 8

Supra Bins fitted with Partitions.

LOUVRE PANELS ▶

The Louvre Panels are made from 1.5mm (T) CRCA steel duly powder coated in Light Grey RAL 7035 colour and are available in four sizes. These louvre panels can be easily fitted on walls, on FSS/C & FSS/LP 6 stands & SFT trolley.

Dimension of Louvre Panels		Load Bearing Chart		
Art No	Dimensions in mm	No of Lips per Louvre	Load Bearing Capacity (KG)	Max Load (KG)/ Lip
LP 1	457 (W) x 457 (H)	72	180	12
LP 2	457 (W) x 610 (H)	96	240	12
LP 3	457 (W) x 914 (H)	144	360	12
LP 6	457 (W) x 1829 (H)	288	720	12

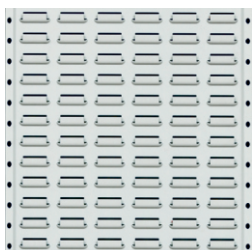
Colour : Light Grey RAL 7035

Maximum No of bins per louvre panel				
Art No	LP 1	LP 2	LP 3	LP 6
SB 1	24	32	48	96
SB 2	16	20	32	64
SB 3	9	12	18	36
SB 4	6	8	12	24
SB 5	3	4	6	12
SB 6	6	8	12	24

All dimensions in mm approx.

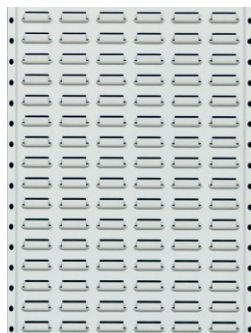
LP 1

Size : 457mm x 457mm



LP 2

Size : 457mm x 610mm



◀ SUPRA BIN PARTITIONS

Other accessories used to optimize Supra Bins usage are bin partitions.

Horizontal partition for SB 4 & SB 6

Art No : HP SB 4/6

Standard Packing : 20 pcs. per ctn.

Vertical partition for SB 4 & SB 5

Art No : VP SB 4/5

Standard Packing : 10 pcs. per ctn.

Vertical partition for SB 6

Art No : VP SB 6

Standard Packing : 10 pcs. per ctn.

Vertical Partition for SB 7 & SB 7X

Art No : VP SB 7

Standard Packing : 10 pcs. per ctn.

Vertical Partition for SB 8

Art No : VP SB 8

Standard Packing : 10 pcs. per ctn.

LP 6

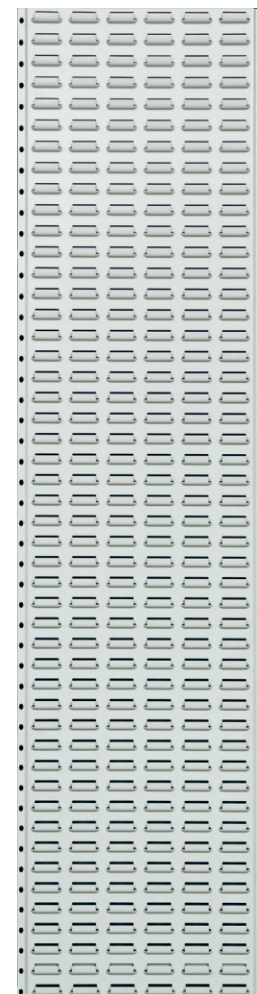
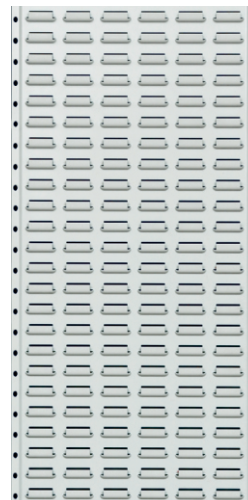
Size : 457mm x 1830mm



Supra Bins Fitted on LP 1 Louvre Panel

LP 3

Size : 457mm x 914mm



LOUVRE PANEL STAND : FSS/C

Free standing stand FSS/C are made from M. S. Steel Square Pipes of size 25mm (L) x 25mm (W) x 1.2mm (T) and are duly powder coated in Light Grey RAL 7035 colour. Stands are fitted with ergonomic plastic shoes for proper stability.

These stands are used to mount Louvre Panels LP 1, LP 2 or LP 3. Louvres can be mounted on single side or both sides for dual use.

Art No : FSS/C

Dimension : 457mm (W) X 630mm (D) X 1560mm (H)

Colour : Light Grey RAL 7035.



LOUVRE PANEL STAND : FSS/LP6

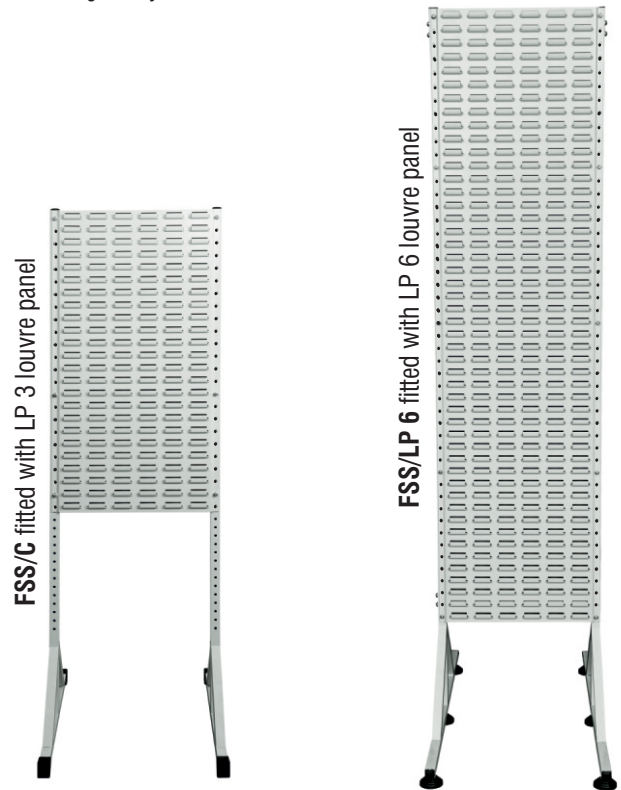
Free standing stand FSS/LP6 are made from M. S. Square Pipes of size 25mm (L) x 25mm (W) x 1.2mm (T) and are duly powder coated in Light Grey RAL 7035 colour. Stands are fitted with levelling base (6 nos.) for proper stability. These stands are specifically designed to be used with louvre panel LP 6.

These Louvres can be mounted on single side or both sides for dual use.

Art No : FSS/LP 6

Dimension : 457mm (W) X 905mm (D) X 2160mm (H)

Colour : Light Grey RAL 7035.



SHOP FLOOR TROLLEY : SFT ►

Alkon Shop Floor Trolleys are made from M. S. Steel Rectangular Pipes of size 20mm (L) x 40mm (W) x 1.2mm (T) and duly Powder coated in Light Grey RAL 7035 colour. Trolleys can be used single sided or double sided as per requirement. Ideal for component storage and transfer to assembly or production areas.

Unit comprises of a base frame fitted with an aluminium checkered plate on the top and four heavy duty castors on the bottom and a top frame unit on which two Louvre Panels of size LP 2 can be fitted on each side. Trolley has handles on both sides. It is packed in knock down condition.

Dimension : 970mm (W) x 600mm (D) x 1100mm (H)

Colour : Light Grey RAL 7035.

Art No : SFT

Trolley without Louvre Panels and Bins.

(Order 2 Nos LP 2 for single side use and 4 Nos LP 2 for double side use separately).



SHOP FLOOR TROLLEY - SFT

LOUVRE PANEL STAND : FSS/C ▶

Free standing stand FSS/C are made from M.S. Steel Square Pipes of size 25mm (L) x 25mm (W) x 1.2mm (T) and are duly powder coated in Light Grey RAL 7035 colour. Stands are fitted with ergonomic plastic shoes for proper stability. These stands are used to mount louvre panels LP 1, LP 2 or LP 3.

Louvres can be mounted on single side or both sides for dual use.

Art No : FSS/C

Dimension : 457mm (W) X 630mm (D) X 1560mm (H)

Colour : Light Grey RAL 7035.


FSS/C

Fitted with Louvre Panel
LP 2- 2 Nos on one side.

FSS/C
Fitted with Louvre Panel
LP 2- 4 Nos (2 Nos on each side).


FSS/C

Fitted with Louvre Panel
LP 3- 2 Nos (1 No on each side).

No of Louvre Panels per Stand			
FSS/C	LP 1	LP 2	LP 3
Single	2	2	1
Double	4	4	2

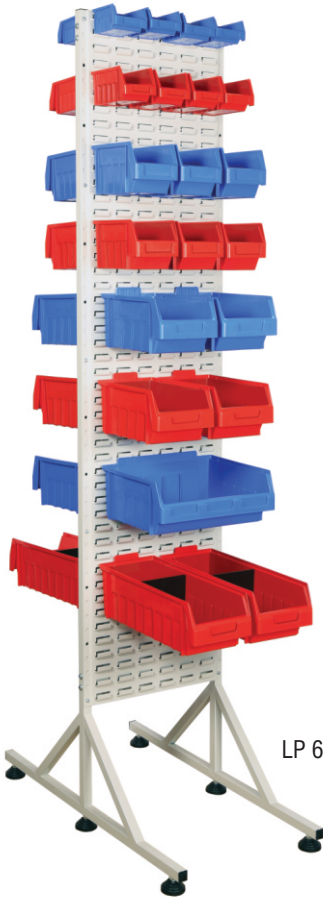
LOUVRE PANEL STAND : FSS/LP 6

Free standing stand FSS/LP 6 are made from M.S. Steel Square Pipes of size 25mm (L) x 25mm (W) x 1.2mm (T) and are duly powder coated in Light Grey RAL 7035 colour. Stands are fitted with ergonomic plastic shoes for proper stability. These stands are used to mount louvre panel LP 6. Louvres can be mounted on single side or both sides for dual use.

Art No : FSS/LP 6

Dimension : 457mm (W) X 905mm (D) X 2160mm (H)

Colour : Light Grey RAL 7035.



FSS/C

Fitted with Louvre Panel
LP 6- 2 Nos (1 No on each side).

SHOP FLOOR TROLLEY : SFT

Alkon Shop Floor Trolleys are made from M.S. Steel Rectangular Pipes of size 20mm (L) x 40mm (W) x 1.2mm (T) and duly Powder coated in Light Grey RAL 7035 colour. Trolleys can be used single sided or double sided as per requirement. Ideal for component storage and transfer to assembly or production areas. Unit comprises of base unit with aluminium checkered top plate fitted with castors and a frame on which two Louvre Panels of size LP 2 can be fitted on each side. Trolley has handles on both sides. It is packed in knock down condition.

Dimension : 970mm (W) x 600mm (D) x 1100mm (H)

Colour : Light Grey RAL 7035.

Art No : SFT

Trolley without Louvre Panels and Bins.

(Order 2 Nos of LP 2 for single side use and 4 Nos of LP 2 for double side use separately).



SHOP FLOOR TROLLEY - SFT

fitted with mixed Supra Bins on both the sides.

As per the image shown above single sided trolley can hold 8 Nos of SB 1 Bins, 16 Nos of SB 2 Bins, 6 Nos of SB 3 Bins, 5 Nos of SB 4 Bins & extra bins on the bottom table top or different sizes of bins as per your requirement.

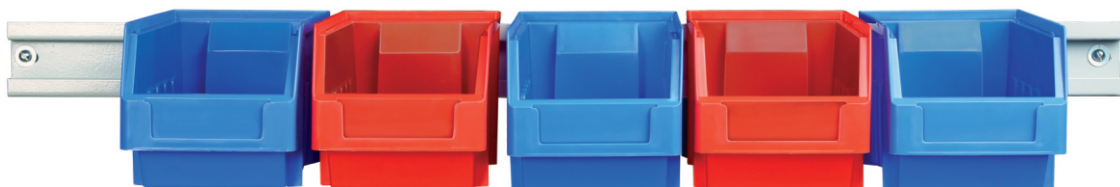
UNIVERSAL RAIL : AUR-1 ►

Universal Rails are made from 1.5mm (T) CRCA Steel duly powder coated in Light Grey RAL 7035 colour and can be mounted on any surface like walls, benches, slotted angle systems, stands, and trolleys. These rails increase the flexibility of using different sizes of bins with ease and help in optimizing storage space.

Art No : AUR -1

Dimension : 915mm (W) x 60mm (H)

Colour : Light Grey RAL 7035.



Supra Bins Mounted on Universal Rail **AUR-1**

Supra Bins	SB 1	SB 2	SB 3	SB 4	SB 5	SB 6
Max. Bins per Rail	9	9	7	5	2	5



ALKON TUFF STAND

LOUVRE PANEL : ATSLP 914 x 610

These Louvre panels are made from 1.5mm (T) CRCA steel powder coated in Light Grey RAL 7035 colour. These louvre panels are designed to be fitted on ALKON Tuff Single or Double sided Stands and Alkon Tuff Trolley.

Dimension : 914mm (W) x 610mm (H).

Colour : Light Grey RAL 7035.

Louvre Panels Stand		Load Bearing Chart		
Art No	Dimensions in mm	No of Lips per Louvre	Load Bearing Capacity (KG)	Max Load (KG)/ Lip
V-ATSLP	914 (W) x 610 (H)	192	420	12

◀ ALKON TUFF SINGLE SIDED STAND : ATSSS

These stands are made from M.S. Steel Rectangular Pipes of size 25mm (L) x 50mm (W) x 1.6mm (T)

These stands are used to mount three panels of ATSLP 914mm (W) X 610mm (H) on single side.

Dimension : 915mm (W) x 550mm (D) x 1925mm (H)

Colour : Light Grey RAL 7035.

ALKON TUFF DOUBLE SIDED STAND : ATDSS ▶

These stand are made from M.S. Steel Rectangular Pipes of size 25mm (L) x 50mm (W) x 1.6mm (T). These stands are used to mount three numbers of ATSLP 914mm (W) X 610mm (H) on each side.

Dimension : 915mm (W) x 700mm (D) x 1925mm (H)

Colour : Light Grey RAL 7035

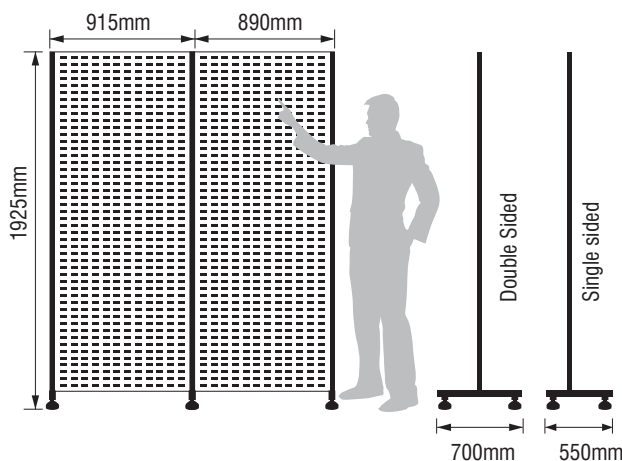


◀ ALKON TUFF ADD ON SYSTEMS

These louvre stands provide an efficient way to organize small parts bins (Supra Bins, Hippo Bins, Rhino Tuff Bins, Bull Bins and Koala Pick Bins) providing a high density storage solution whilst maintaining an efficient way to retrieve items from the picking face.

These units can be configured as stand alone bays or built in runs using a starter and extension bays in either single or double sided formats.

For the add on bay the width increases by 890mm per add on depth and height remains the same.



UNIVERSAL RAIL : AUR-1

Universal Rails of size 915mm (L) X 60mm (H) are made from 1.5 mm (T) CRCA Steel and powder coated in Light Gray RAL 7035 colour.

Rails can be mounted on any surface like walls, benches, slotted angle systems, stands, and trolleys.



These rails increase the flexibility of using different sizes of bins with ease and helps in optimizing storage space.

ALKON TUFF TROLLEY : ATTB ►

Alkon Tuff Trolleys are made from M.S. Steel Rectangular Pipes of size 25mm (L) x 50mm (W) x 1.6mm (T) duly powder coated in Light Grey RAL 7035 colour. Trolley can be used single sided or double sided as per requirement. Each trolley comes fitted with ergonomic plastic handles so that the trolley can be comfortably moved. The trolley is fitted with heavy duty swivel castors that offer ease of movement. Two of the castors are braked, which means the trolley can be secured when not in use.

Dimension : 995mm (W) x 700mm (D) x 1430mm (H)
(Considering castor wheel extension width wise inclusive of handle)
Colour : Light Grey RAL 7035.

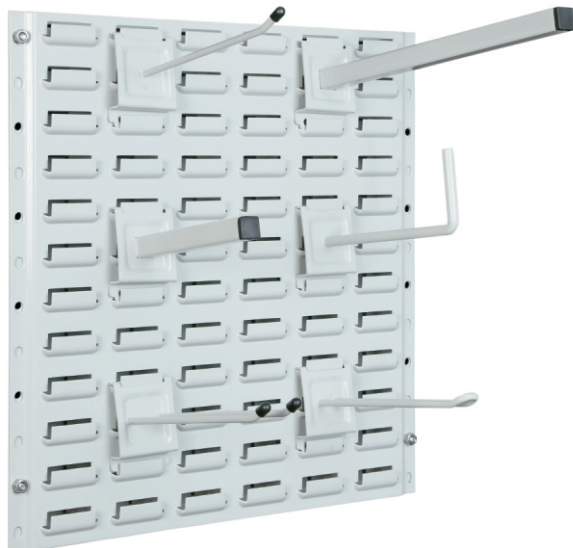
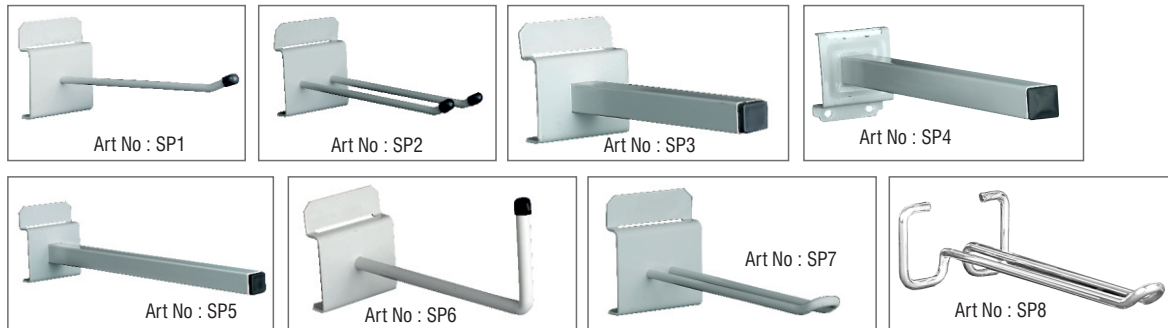
Art No : ATTB

Trolley without louvre panels and bins.
(Order 2 Nos ATSLP 914mm (W) x 610mm (H) for single side use and 4 Nos ATSLP 914mm (W) x 610mm (H) for double side use separately).



LOUVRE PANEL SPIGOTS

Louvre Panel Spigots are available in 8 different sizes. These spigots are ideal for hanging a variety of parts such as fan belts, gaskets, hoses, automotive parts and packaged items.



LP 1 Louvre Fitted with Spigots.

Art No	Description
SP1	Single Prong 200mm (L) x 6mm (D) Rod
SP2	Double Prong 200mm (L) x 6mm (D) Rod
SP3	Pipe Hook 150mm (L) (20mm x 20mm x 1.5mm pipe section)
SP4	Pipe Hook 250mm (L) (25mm x 25mm x 1.5mm pipe section)
SP5	Pipe Hook 300mm (L) (20mm x 20mm x 1.5mm pipe section)
SP6	Steel Hook 200mm (L) x 9.5mm (D) Rod
SP7	Euro Hook 200mm (L) x 6mm (D) Rod
SP8	Chrome Wire Hook 150mm (L) x 5mm (D)



ALKON TUFF SINGLE SIDED STAND : ATSSS ▶

These stands are made from M. S. Steel Rectangular Pipes of size 25mm (L) x 50mm (W) x 1.6mm (T).

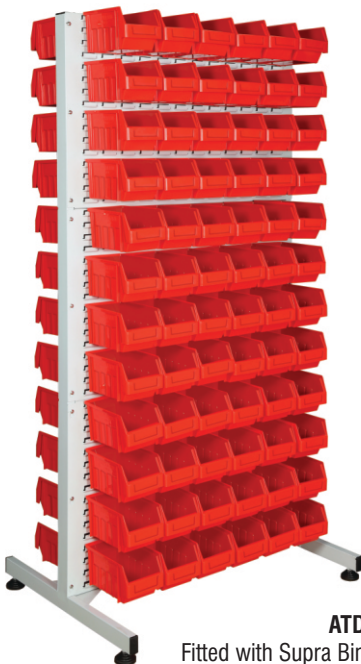
These stands are used to mount three panels of ATSLP 914mm (W) X 610mm (H) on single side.

Dimension : 915mm (W) x 550mm (D) x 1925mm (H)

Colour : Light Grey RAL 7035.

Maximum No of Supra Bins mounted on Alkon Tuff Stands & Trolley shown as below :

ART NO	ALKON TUFF STAND		ALKON TUFF TROLLEY	
	Single Sided	Double Sided	Single Sided	Double Sided
SB 1	216	432	144	288
SB 2	144	288	90	180
SB 3	72	144	48	96
SB 4	60	120	40	80
SB 5	24	48	16	32
SB 6	60	120	40	80



ATDSS Stand
Fitted with Supra Bins SB 3 on both the sides.

ALKON TUFF TROLLEY : ATTB ▶

Alkon Tuff Trolleys are made from M. S. Steel Rectangular Pipes of size 25mm (L) x 50mm (W) x 1.6mm (T) duly powder coated in Light Grey RAL 7035 colour. Trolley can be used single sided or double sided as per requirement. Each trolley comes fitted with ergonomic plastic handles so that the trolley can be comfortably moved.

The trolley is fitted with heavy duty swivel castors that offer ease of movement. Two of the castors are braked, which means the trolley can be secured when not in use.

Dimension : 995mm (W) x 700mm (D) x 1430mm(H)
(Considering castor wheel extension width wise inclusive of handle)
Colour : Light Grey RAL 7035.

Art No : ATTB

Trolley without Louvre Panels and Bins.

(Order 2 Nos of ATSLP 914mm (W) x 610mm (H) for single side use and 4 Nos of ATSLP 914mm (W) x 610mm (H) for double side use separately).



ATSSS Stand
Fitted with Supra Bins SB 4 on single side.

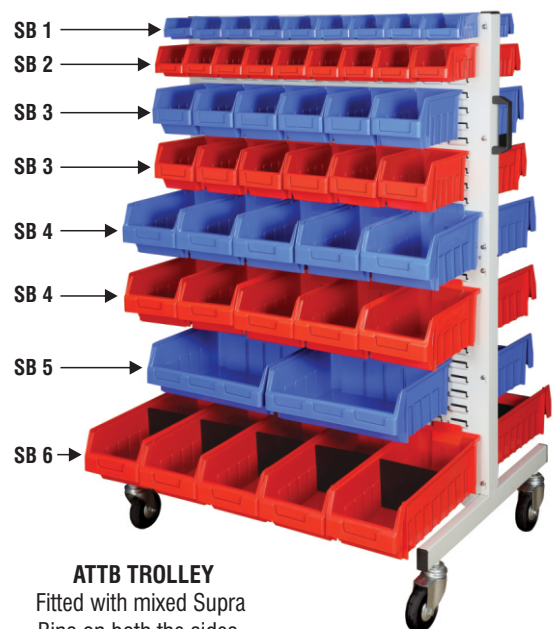
◀ ALKON TUFF DOUBLE SIDED STAND : ATDSS

These stands are made from M. S. Steel Rectangular Pipes of size 25mm (L) x 50mm (W) x 1.6mm (T).

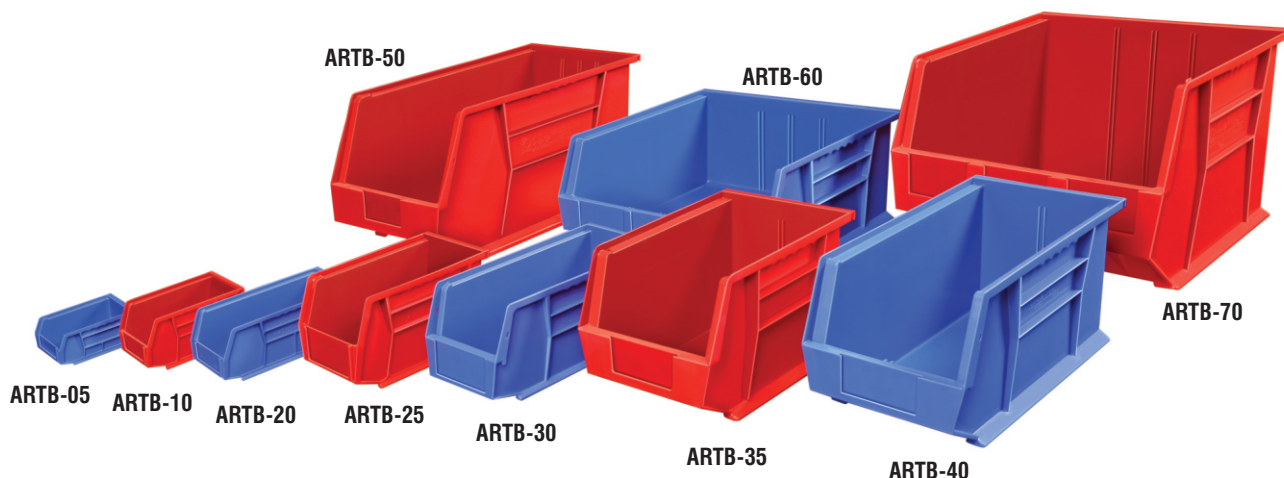
These stands are used to mount three panels of ATSLP 914mm (W) X 610mm (H) on each side.

Dimension : 915mm (W) x 700mm (D) x 1925mm (H)

Colour : Light Grey RAL 7035.

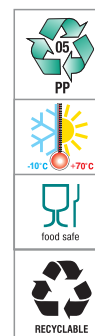
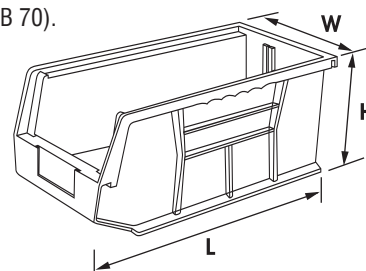


ATTB TROLLEY
Fitted with mixed Supra Bins on both the sides.



■ **MADE FROM POLYPROPYLENE COPOLYMER.**

- Strong ribs provided for optional partitions to increase storage options.
- Full length rear lip support provided for hanging bins on Louvre Panels or Rails (Except for ARTB 70).
- Resistant to most industrial solvents.
- Reinforced ribs adds strength and avoids spreading.
- Bins are designed to stack one on top of each other.
- Extra wide stacking base for secure stacking.
- Extra wide label slot for easy content identification.
- Stopper prevents stacked bins from shifting forward.



Art No	: ARTB-05
Outside Dimensions in mm	: 109 (L) x 104 (W) x 49 (H)
Inside Dimensions in mm	: 95 (L) x 89 (W) x 43 (H)
Effective Height in mm	: 23
Standard Packing	: 60 pcs. per ctn.
Volume Per Box CBM	: 0.0383
Slots for Partition	: NA
Colour	: Red / Blue



Art No	: ARTB-10
Outside Dimensions in mm	: 136 (L) x 106 (W) x 76 (H)
Inside Dimensions in mm	: 125 (L) x 90 (W) x 65 (H)
Effective Height in mm	: 28
Standard Packing	: 60 pcs. per ctn.
Volume Per Box CBM	: 0.0688
Slots for Partition	: NA
Colour	: Red / Blue



Art No	: ARTB-20
Outside Dimensions in mm	: 187 (L) x 106 (W) x 76 (H)
Inside Dimensions in mm	: 171 (L) x 90 (W) x 65 (H)
Effective Height in mm	: 32
Standard Packing	: 40 pcs. per ctn.
Volume Per Box CBM	: 0.0639
Slots for Partition	: NA
Colour	: Red / Blue

All dimensions in mm approx.



Art No : **ARTB-25**
 Outside Dimensions in mm : 205 (L) x 139 (W) x 126 (H)
 Inside Dimensions in mm : 190 (L) x 115 (W) x 121 (H)
 Effective Height in mm : 61
 Standard Packing : 40 pcs. per ctn.
 Volume Per Box CBM : 0.1512
 Slots for Partition : NA
 Colour : Red / Blue



Art No : **ARTB-30**
 Outside Dimensions in mm : 274 (L) x 140 (W) x 127 (H)
 Inside Dimensions in mm : 256 (L) x 115 (W) x 115 (H)
 Effective Height in mm : 56
 Standard Packing : 40 pcs. per ctn.
 Volume Per Box CBM : 0.2102
 Slots for Partition : 1 Slot for Vertical Partition.
 Colour : Red / Blue



Art No : **ARTB-35**
 Outside Dimensions in mm : 280 (L) x 210 (W) x 179 (H)
 Inside Dimensions in mm : 255 (L) x 170 (W) x 160 (H)
 Effective Height in mm : 80
 Standard Packing : 20 pcs. per ctn.
 Volume Per Box CBM : 0.2098
 Slots for Partition : 1 Slot for Vertical Partition.
 Colour : Red / Blue



Art No : **ARTB-40**
 Outside Dimensions in mm : 375 (L) x 210 (W) x 179 (H)
 Inside Dimensions in mm : 355 (L) x 170 (W) x 160 (H)
 Effective Height in mm : 80
 Standard Packing : 10 pcs. per ctn.
 Volume Per Box CBM : 0.1537
 Slots for Partition : 1 Slot for Vertical Partition.
 Colour : Red / Blue



Art No : **ARTB-50**
 Outside Dimensions in mm : 457 (L) x 280 (W) x 255 (H)
 Inside Dimensions in mm : 432 (L) x 241 (W) x 240 (H)
 Effective Height in mm : 108
 Standard Packing : 6 pcs. per ctn.
 Volume Per Box CBM : 0.2079
 Slots for Partition : 1 Slot for Vertical Partition.
 Colour : Red / Blue



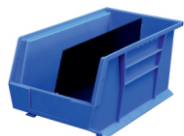
Art No : **ARTB-60**
 Outside Dimensions in mm : 375 (L) x 415 (W) x 179 (H)
 Inside Dimensions in mm : 355 (L) x 375 (W) x 160 (H)
 Effective Height in mm : 80
 Standard Packing : 5 pcs. per ctn.
 Volume Per Box CBM : 0.1537
 Slots for Partition : 3 Slots for Vertical Partitions.
 Colour : Red / Blue

All dimensions in mm approx.

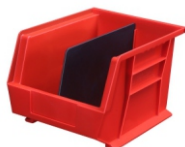


Art No : ARTB-70
 Outside Dimensions in mm : 460 (L) x 420 (W) x 292 (H)
 Inside Dimensions in mm : 435 (L) x 375 (W) x 282 (H)
 Effective Height in mm : 155
 Standard Packing : 3 pcs. per ctn.
 Volume Per Box CBM : 0.1805
 Slots for Partition : 3 Slots for Vertical Partitions.
 Colour : Red / Blue

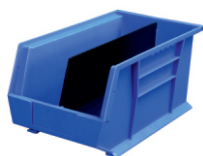
All dimensions in mm approx.



RHINO TUFF BIN 30
with 1 No of VP ARTB-30



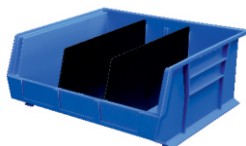
RHINO TUFF BIN 35
with 1 No of VP ARTB-35



RHINO TUFF BIN 40
with 1 No of VP ARTB-40



RHINO TUFF BIN 50
with 1 No of VP ARTB-50



RHINO TUFF BIN 60
with 2 Nos of VP ARTB-60



RHINO TUFF BIN 70
with 1 No of VP ARTB-70

Rhino Tuff Bins Fitted with partitions.

RHINO TUFF BIN PARTITIONS

Other accessories used to optimize Rhino Bin's usage are bin partitions.

Vertical Partition for RHINO TUFF BIN 30.

Art No : VP ARTB - 30 Standard Packing : 10 pcs. per ctn.

Vertical Partition for RHINO TUFF BIN 35.

Art No : VP ARTB - 35 Standard Packing : 10 pcs. per ctn.

Vertical Partition for RHINO TUFF BIN 40.

Art No : VP ARTB - 40 Standard Packing : 10 pcs. per ctn.

Vertical Partition for RHINO TUFF BIN 50.

Art No : VP ARTB - 50 Standard Packing : 10 pcs. per ctn.

Vertical Partition for RHINO TUFF BIN 60.

Art No : VP ARTB - 60 Standard Packing : 10 pcs. per ctn.

Vertical Partition for RHINO TUFF BIN 70.

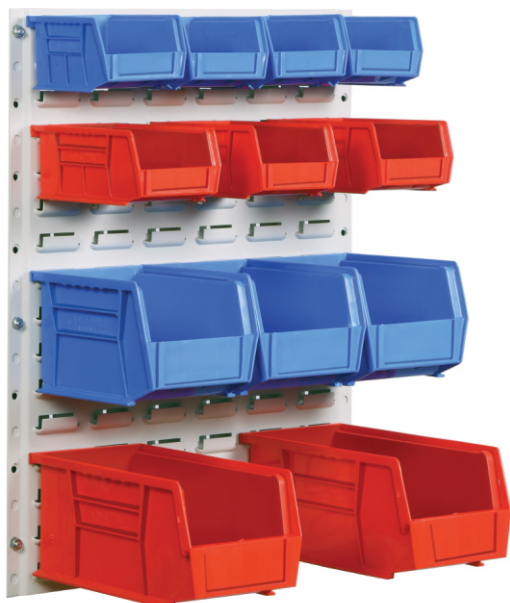
Art No : VP ARTB - 70 Standard Packing : 10 pcs. per ctn.

LOUVRE PANELS

Louvre Panels are made from 1.5mm (T) CRCA Steel and Powder coated in Light Grey RAL 7035 colour. RHINO TUFF BINS can be mounted with ease in various combinations as listed below :

Maximum No of Bins per Louvre Panel				
Art No	LP 1	LP 2	LP 3	LP 6
SIZE	457 x 457	457 x 610	457 x 914	457 x 1829
ARTB-05	24	32	48	96
ARTB-10	16	20	32	64
ARTB-20	16	20	32	64
ARTB-25	9	12	18	36
ARTB-30	9	12	18	36
ARTB-35	4	6	8	18
ARTB-40	4	6	8	18
ARTB-60	2	3	4	9

All dimensions in mm approx.



LP 2 Louvre Panel fitted with Rhino Tuff Bins.

LOUVRE PANEL STAND : FSS/C ▶

Free standing stand FSS/C are made from M.S. Steel Square Pipes of size 25mm (L) x 25mm (W) x 1.2mm (T) and are duly powder coated in Light Grey RAL 7035 colour. Stands are fitted with ergonomic plastic shoes for proper stability. These stands are used to mount louvre panels LP 1, LP 2 or LP 3. Louvres can be mounted on single side or both sides for dual use.

Art No : FSS/C

Dimension : 457mm (W) X 630mm (D) X 1560mm (H)

Colour : Light Grey RAL 7035.



FSS/C
Fitted with Louvre Panel
LP 2- 4 Nos (2 Nos on each side)



FSS/C
Fitted with Louvre Panel
LP 2- 2 Nos on one side.



FSS/C
Fitted with Louvre Panel
LP 3- 2 Nos (1 No on each side)

No of Louvre Panels per stand			
FSS/C	LP 1	LP 2	LP 3
SINGLE	2	2	1
DOUBLE	4	4	2

LOUVRE PANEL STAND : FSS/LP 6

Free standing stand FSS/LP 6 are made from M.S. Steel Square Pipes of size 25mm (L) x 25mm (W) x 1.2mm (T) and are duly powder coated in Light Grey RAL 7035 colour. Stands are fitted with ergonomic plastic shoes for proper stability. These stands are used to mount Louvre Panel LP 6. Louvres can be mounted on single side or both sides for dual use.

Art No : FSS/LP 6

Dimension : 457mm (W) X 905mm (D) X 2160mm (H)
Colour : Light Grey RAL 7035.



FSS/C

Fitted with Louvre Panel LP 6- 2 Nos
(1 No on each side)

SHOP FLOOR TROLLEY : SFT

Alkon Shop Floor Trolleys are made from M.S. Steel Rectangular Pipes of size 20mm (L) x 40mm (W) x 1.2mm (T) and duly powder coated in Light Grey RAL 7035 colour. Trolleys can be used single sided or double sided as per requirement. Ideal for component storage and transfer to assembly or production areas. Unit comprises of base unit with aluminium checkered top plate fitted with castors and a frame on which two Louvre Panels of size LP 2 can be fitted on each side. Trolley has handles on both sides. It is packed in knock down condition.

Art No : SFT

Dimension : 970mm (W) x 600mm (D) x 1100mm (H)
Colour : Light Grey RAL 7035.

Trolley without Louvre Panels and bins.

(Order 2 Nos of LP 2 for single side use and 4 Nos of LP 2 for double side use separately).



SHOP FLOOR TROLLEY - SFT

Fitted with mixed Rhino Tuff Bins on both the sides.

UNIVERSAL RAIL : AUR-1

Universal Rails are made from 1.5 CRCA Steel duly powder coated in Light Grey RAL 7035 colour and can be mounted on any surface like walls, benches, slotted angle systems, stands, and trolleys. These rails increase the flexibility of using different sizes of bins with ease and help in optimizing storage space.

Art No : AUR -1

Dimension : 915mm (W) x 60mm (H)
Colour : Light Grey RAL 7035.



Rhino Tuff Bins Mounted on Universal Rail AUR-1

Rhino Tuff Bins	ARTB-05	ARTB-10	ARTB-20	ARTB-25
Max. Bins per Rail	8	8	8	6

Rhino Tuff Bins	ARTB-30	ARTB-35	ARTB-40	ARTB-60
Max. Bins per Rail	6	4	4	2

ALKON TUFF SINGLE SIDED STAND : ATSSS▶

These stands are made from M. S. Steel Rectangular Pipes of size 25mm (L) x 50mm (W) x 1.6mm (T).

These stands are used to mount three panels of ATSLP 914mm (W) X 610mm (H) on single side.

Dimension : 915mm (W) x 550mm (D) x 1925mm (H)

Colour : Light Grey RAL 7035.

Maximum No of Rhino Tuff Bins mounted on Alkon Tuff Stands & Trolley shown as below :

ART NO	ALKON TUFF STAND		ALKON TUFF TROLLEY	
	Single Sided	Double Sided	Single Sided	Double Sided
ARTB-05	192	384	128	256
ARTB-10	128	256	88	176
ARTB-20	128	256	88	176
ARTB-25	72	144	48	96
ARTB-30	72	144	48	96
ARTB-35	36	72	24	48
ARTB-40	36	72	24	48
ARTB-60	18	36	12	24



ATSSS Stand

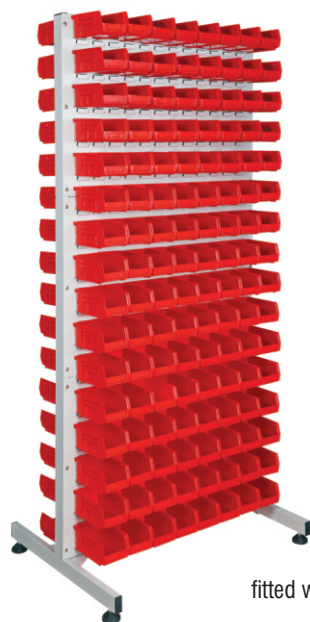
Fitted with Rhino Tuff Bin ARTB-40 on single side.

▶ALKON TUFF DOUBLE SIDED STAND : ATDSS

These stands are made from M.S. Steel Rectangular Pipes of size 25mm (L) x 50mm (W) x 1.6mm (T). These stands are used to mount three panels of ATSLP 914 X 610 on each side.

Dimension : 915mm (W) x 700mm (D) x 1925mm (H)

Colour : Light Grey RAL 7035.



ATDSS Stand

fitted with Rhino Tuff Bins ARTB-20 on both the sides.

ALKON TUFF TROLLEY : ATTB▶

Alkon Tuff Trolleys are made from Rectangular Steel Pipes of size 25mm (L) x 50mm (W) x 1.6mm (T) duly powder coated in Light Grey RAL 7035 colour. Trolley can be used single sided or double sided as per requirement. Each trolley comes fitted with ergonomic plastic handles so that the trolley can be comfortably moved. The trolley is fitted with heavy duty swivel castors that offer ease of movement. Two of the castors are braked, which means the trolley can be secured when not in use.

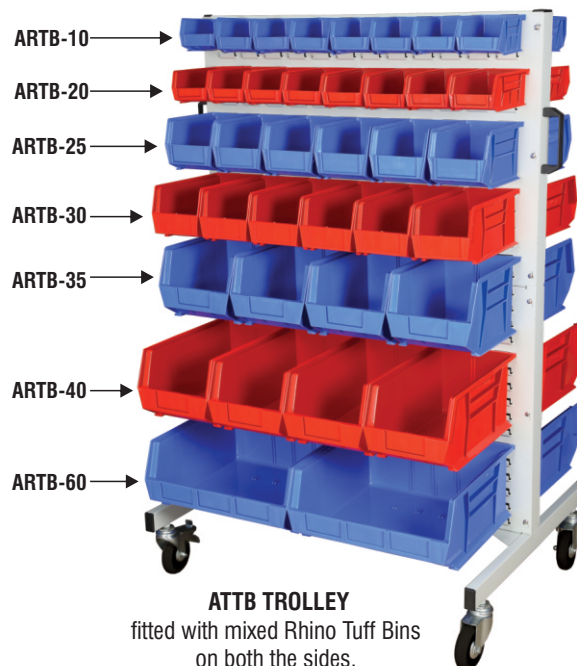
Art No : ATTB

Trolley without Louvre Panels and bins. (Order 2 Nos of ATSLP 914 x 610 for single side use and 4 Nos of ATSLP 914 x 610 for double side use separately).

Dimension : 995mm (W) x 700mm (D) x 1430mm (H)

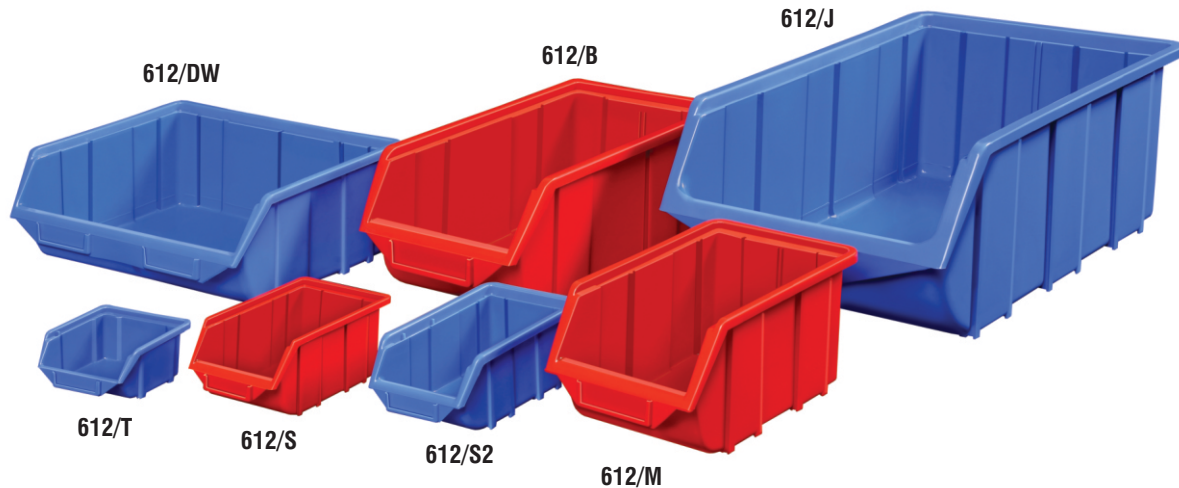
(Considering castor wheel extension widthwise inclusive of handle)

Colour : Light Grey RAL 7035.

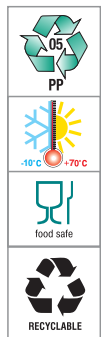
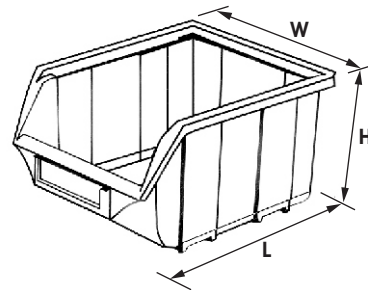


ATTB TROLLEY

fitted with mixed Rhino Tuff Bins on both the sides.



- **MADE FROM POLYPROPYLENE COPOLYMER.**
- Strong rear lip for use with louvre panels or rails. (Except for 612/J)
- Strong heavy duty with rounded base, sides & stacking rim.
- Resistant to most industrial solvents.
- Can be stacked one on top of each other.
- Clear access to contents.
- Hippo bins are designed to stack one on top of each other.
- All bins with identification card holders.
- Partitions available.
- Stopper prevents stacked bins from shifting forward.
- Rounded ergonomic design to give extra strength and sturdiness for storage.



Art No	: 612/T (Tiny)
Outside Dimensions in mm	: 100 (L) x 110 (W) x 53 (H)
Inside Dimensions in mm	: 80 (L) x 90 (W) x 43 (H)
Effective Height in mm	: 25
Standard Packing	: 60 pcs. per ctn.
Volume Per Box CBM	: 0.0235
Slots for Partition	: NA
Colour	: Red / Blue



Art No	: 612/S (Small)
Outside Dimensions in mm	: 150 (L) x 110 (W) x 75 (H)
Inside Dimensions in mm	: 130 (L) x 90 (W) x 68 (H)
Effective Height in mm	: 40
Standard Packing	: 60 pcs. per ctn.
Volume Per Box CBM	: 0.0820
Slots for Partition	: NA
Colour	: Red / Blue / Grey / Green / Yellow / Black



Art No	: 612/S2 (Small)
Outside Dimensions in mm	: 175 (L) x 115 (W) x 75 (H)
Inside Dimensions in mm	: 150 (L) x 90 (W) x 64 (H)
Effective Height in mm	: 40
Standard Packing	: 40 pcs. per ctn.
Volume Per Box CBM	: 0.0571
Slots for Partition	: NA
Colour	: Red / Blue

All dimensions in mm approx.



Art No : 612/M (Medium)
 Outside Dimensions in mm : 250 (L) x 165 (W) x 125 (H)
 Inside Dimensions in mm : 225 (L) x 132 (W) x 115 (H)
 Effective Height in mm : 67
 Standard Packing : 40 pcs. per ctn.
 Volume Per Box CBM : 0.2084
 Slots for Partition : 1 Slot for Vertical Partition.
 Colour : Red / Blue



Art No : 612/DW (Double Wide)
 Outside Dimensions in mm : 250 (L) x 344 (W) x 125 (H)
 Inside Dimensions in mm : 210 (L) x 312 (W) x 115 (H)
 Effective Height in mm : 67
 Standard Packing : 20 pcs. per ctn.
 Volume Per Box CBM : 0.2208
 Slots for Partition : 3 Slots for Vertical Partition.
 Colour : Red / Blue

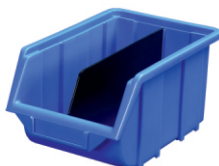


Art No : 612/B (Big)
 Outside Dimensions in mm : 355 (L) x 220 (W) x 150 (H)
 Inside Dimensions in mm : 330 (L) x 182 (W) x 138 (H)
 Effective Height in mm : 85
 Standard Packing : 10 pcs. per ctn.
 Volume Per Box CBM : 0.1243
 Slots for Partition : 1 Slot for Vertical Partition.
 Colour : Red / Blue



Art No : 612/J (Jumbo)
 Outside Dimensions in mm : 515 (L) x 330 (W) x 200 (H)
 Inside Dimensions in mm : 470 (L) x 295 (W) x 180 (H)
 Effective Height in mm : 115
 Standard Packing : 8 pcs. per ctn.
 Volume Per Box CBM : 0.2677
 Slots for Partition : 1 Slot for Vertical Partition.
 Colour : Red / Blue

All dimensions in mm approx.



612/M
with 1 No of 612 M/DW-VP



612/B
with 1 No of 612/B-VP



612/DW
with 1 No of 612 M/DW-VP



612/J
with 1 No of 612/J-VP

HIPPO BIN PARTITIONS

Other accessories used to optimize Hippo Bins usage are bin partitions.

Vertical Partition for HIPPO Bin 612/M & Hippo Bin 612/DW.

Art No : 612/M/DW-VP

Standard Packing : 20 pcs. per ctn.

Vertical Partition for HIPPO Bin 612/B .

Art No : 612/B-VP

Standard Packing : 10 pcs. per ctn.

Vertical Partition for HIPPO Bin 612/J .

Art No : 612/J-VP

Standard Packing : 10 pcs. per ctn.

Hippo Bins fitted with vertical partitions.

LOUVRE PANELS ►

are made from 1.5 mm (T) CRCA Steel and duly powder coated in Light Grey RAL 7035 colour. Hippo Bins can be mounted with ease in variable combination as listed below :

Maximum No of bins per Louvre Panel				
Art No	LP 1	LP 2	LP 3	LP 6
SIZE	457 x 457	457 x 610	457 x 914	457 x 1829
612/T	24	32	48	96
612/S	16	20	32	64
612/S2	16	20	32	64
612/M	6	8	12	24
612/DW	3	4	6	12
612/B	4	6	10	20

All dimensions in mm approx.

LP 3 Louvre Panel
fitted with Hippo Bins.



UNIVERSAL RAIL : AUR-1

Universal rails of size 915mm (L) x 60mm (H) are made from CRCA Steel and powder coated in Light Grey RAL 7035 colour. Rails can be mounted on any surface like Walls, Benches, Slotted angle systems, Stands and Trolleys. These rails increase the flexibility of using different sizes of bins with ease and help in optimizing storage space.

Maximum No of Bins per Universal Rail						
Art No	612/T	612/S	612/S2	612/M	612/DW	612/B
No of bins	8	8	8	5	2	4

The added feature of this rail is that when you use multiple rails one below each other from the second rail onwards the top part of the rail can be used as a support to the lower part of the bin mounted on the above rail and the bottom part of the rail can be used to mount the bin and so on, this helps in using lesser number of rails in the case when bins of height more than 130mm are used.

Art No : AUR -1
Dimension : 915mm (W) x 60mm (H)
Colour : Light Grey RAL 7035.

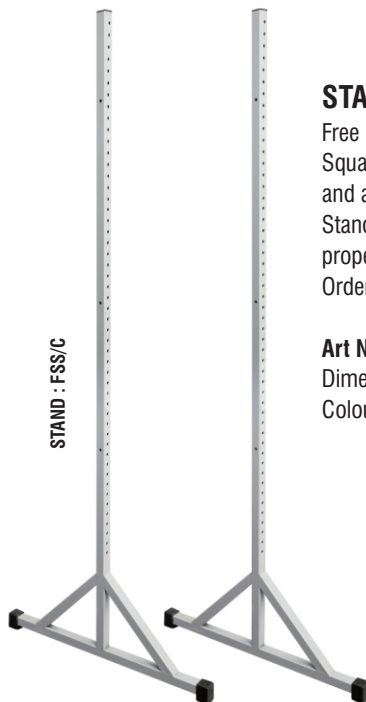


Hippo Bins Mounted on Universal Rail **AUR-1**

STAND FOR CHANNELS : FSS/C ►

Free standing stand FSS/C are made from M. S. Steel Square Pipes of size 25mm (L) x 25mm (W) x 1.2mm (T) and are duly powder coated in Light Grey RAL 7035 colour. Stands are fitted with ergonomic plastic shoes for proper stability. Order Bins, Channels & Stands separately.

Art No : FSS/C
Dimension : 665mm (W) x 1553mm (H) x 610mm (D)
Colour : Light Grey RAL 7035 Powder coated.



FSS/C Stand

Fitted with Hippo Bins mounted on channels.



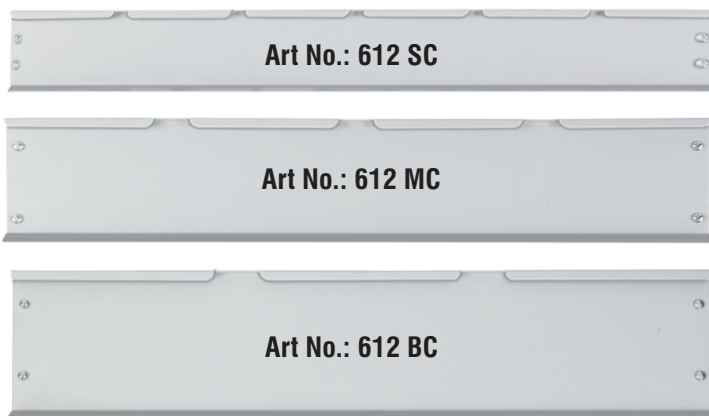
CHANNELS ►

Channels are available in three sizes to suit Hippo Bins of sizes 612/S, 612/M & 612/B.

Small channel 612 SC is made from 1mm (T) CRCA Steel. Medium channel 612 MC and Big channel 612 BC is made from 1.5 mm (T) CRCA Steel.

Art No.: 612 SC, 612 MC & 612 BC

Colour : Light Grey RAL 7035 Powder coated.



Type of Channels	Numbers of Channels per FSS stand	Size of Bins	No. of Bins per Channel
612 SC	12	612/S	6
612 MC	8	612/M	4
612 BC	7	612/B	3

ART NO.	Width	Height	Depth
612 SC	665mm	79mm	18mm
612 MC	665mm	130mm	22mm
612 BC	665mm	159mm	22mm

All dimensions in mm approx.

LOUVRE PANEL STAND : FSS/C

Free standing stands FSS/C are made from M. S. Steel Square Pipes of size 25mm (L) x 25mm (W) x 1.2mm (T) and are duly powder coated in Light Grey RAL 7035 colour.

Stands are fitted with ergonomic plastic shoes for proper stability. These stands are used to mount louvre panels - LP 1, LP 2 or LP 3.

Louvres can be mounted on single side or both sides for dual use.

Art No.: FSS/C

Dimension : 457mm (W) X 630mm (D) X 1560mm (H)

Colour : Light Grey RAL 7035.



FSS/C

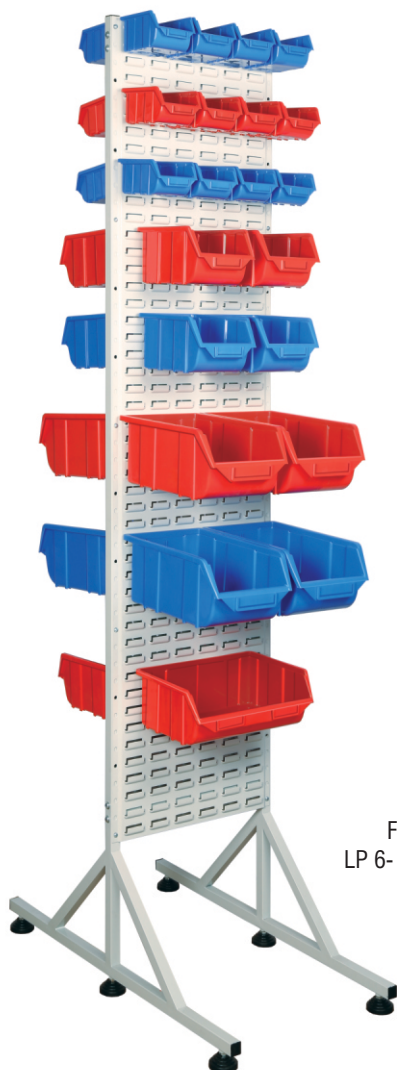
Fitted with Louvre Panel LP 3- 2 Nos
(1 No on each side).

No of Louvre Panels per stand			
FSS/C	LP 1	LP 2	LP 3
SINGLE	2	2	1
DOUBLE	4	4	2



FSS/C

Fitted with Louvre Panel LP 2- 4 Nos
(2 Nos on each side).



FSS/C
Fitted with Louvre Panel
LP 6- 2 Nos (1 No on each side).

◀ LOUVRE PANEL STAND : FSS/LP6

Free standing stands FSS/LP 6 are made from M. S. Steel Square Pipes of size 25mm (L) x 25mm (W) x 1.2mm (T) and are duly powder coated in Light Grey RAL 7035 colour. Stands are fitted with ergonomic plastic shoes for proper stability. These stands are used to mount Louvre Panel LP 6 .
Louvres can be mounted on single side or both sides for dual use.

Art No : FSS/LP 6

Dimension : 457mm (W) X 905mm (D) X 2160mm (H)

Colour : Light Grey RAL 7035.



SHOP FLOOR TROLLEY : SFT ▶

Alkon Shop Floor Trolleys are made from M. S. Steel Rectangular Pipes of size 20mm (L) x 40mm (W) x 1.2mm (T) and duly powder coated in Light Grey RAL 7035 colour.

Trolleys can be used single sided or double sided as per requirement. Ideal for component storage and transfer to assembly or production areas. Unit comprises of base unit with aluminium checkered top plate fitted with castors and a frame on which two Louvre Panels of size LP2 can be fitted on each side. Trolley has handles on both sides. It is packed in knock down condition.

Art No : SFT

Dimension : 970mm (W) x 600mm (D) x 1100mm (H)

Colour : Light Grey RAL 7035.

Trolley without Louvre Panels and Bins.

(Order 2 Nos of LP 2 for single side use and 4 Nos of LP 2 for double side use separately).

SHOP FLOOR TROLLEY - SFT

Fitted with mixed Hippo Bins on both the sides.

ALKON TUFF SINGLE SIDED STAND : ATSSS ▶

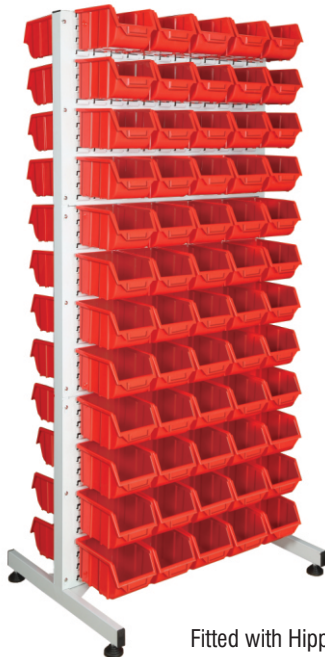
These stands are made from M. S. Steel Rectangular Pipes of size 25mm (L) x 50mm (W) x 1.6mm (T)
These stands are used to mount three panels of ATSLP 914 X 610 on single side.

Dimension : 915mm (W) x 550mm (D) x 1925mm (H)

Colour : Light Grey RAL 7035.

Maximum No of Hippo Bins mounted on Alkon Tuff Stands & Trolley shown as below :

ART NO	ALKON TUFF STAND		ALKON TUFF TROLLEY	
	Single Sided	Double Sided	Single Sided	Double Sided
612/T	192	384	128	256
612/S	112	224	77	154
612/S2	112	224	77	154
612/M	60	120	40	80
612/DW	24	48	16	32
612/B	40	80	28	56



ATDSS Stand

Fitted with Hippo Bins 612/M on both the sides.

ALKON TUFF TROLLEY : ATTB ▶

Alkon Tuff Trolleys are made from M.S. Steel Rectangular Pipes of size 25mm (L) x 50mm (W) x 1.6mm (T) duly powder coated in Light Grey RAL 7035 colour.

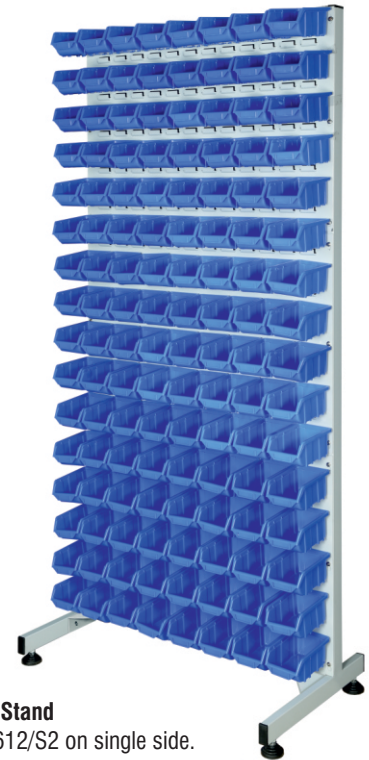
Trolley can be used single sided or double sided as per requirement. Each trolley comes fitted with ergonomic plastic handles so that the trolley can be comfortably moved. The trolley is fitted with heavy duty swivel castors that offer ease of movement. Two of the castors are braked, which means the trolley can be secured when not in use.

Art No : ATTB

Dimension : 995mm (W) x 700mm (D) x 1430mm (H)
(Considering castor wheel extension width wise inclusive of handle)
Colour : Light Grey RAL 7035.

Trolley without louvre panels and Bins.

(Order 2 Nos of ATSLP 914 x 610 for single side use and 4 Nos of ATSLP 914 x 610 for double side use separately).



ATSSS Stand

Fitted with Hippo Bins 612/S2 on single side.

◀ ALKON TUFF DOUBLE SIDED STAND : ATDSS

These stands are made from M. S. Steel Rectangular Pipes of size 25mm (L) x 50mm (W) x 1.6mm (T).

These stands are used to mount three panels of ATSLP 914 X 610 on each side.

Dimension : 915mm (W) x 700mm (D) x 1925mm (H)

Colour : Light Grey RAL 7035.

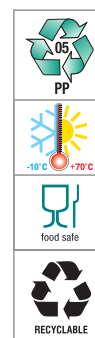
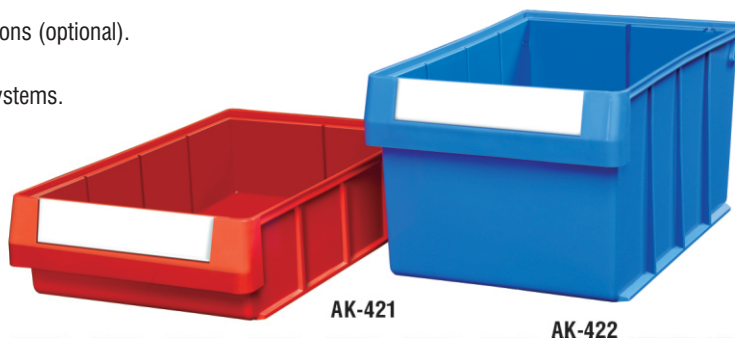


ATTB TROLLEY

Fitted with mixed Hippo Bins on both the sides.

■ **MADE FROM POLYPROPYLENE COPOLYMER.**

- Stable and robust Design.
- Flexible use due to Vertical and Horizontal partitions (optional).
- Resistant to most industrial solvents.
- Compatible with shelving and vertical storage systems.
- Large Label Holder.
- Smooth Internal wall for easy cleaning.
- Anti skid bottom.
- Stackable.



Art No : AK-421

Outside Dimensions in mm : 400 (L) x 255 (W) x 100 (H)
 Inside Dimensions in mm : 365 (L) x 230 (W) x 90 (H)
 Effective Height in mm : 90
 Standard Packing : 10 pcs. per ctn.
 Volume Per Box CBM : 0.1014
 Slots for Partition : 3 slots for Horizontal Partitions or 1 slot for Vertical Partition.
 Colour : Red / Blue



Art No : AK-422

Outside Dimensions in mm : 400 (L) x 255 (W) x 200 (H)
 Inside Dimensions in mm : 365 (L) x 230 (W) x 190 (H)
 Effective Height in mm : 190
 Standard Packing : 5 pcs. per ctn.
 Volume Per Box CBM : 0.1025
 Slots for Partition : 3 slots for Horizontal Partitions or 1 slot for Vertical Partition.
 Colour : Red / Blue

All dimensions in mm approx.



AK-421

with 3 Nos of AK-421/HP



AK-421

with 3 Nos of AK-421/HP S1 &
1 No of AK-421/VP S3



AK-422

with 3 Nos of AK-422/HP

Tote Bins fitted with Vertical & Horizontal partitions.

TOTE BIN PARTITIONS

Other accessories used to optimize Hippo Bins usage are bin partitions.

Horizontal Partition for Tote Bin AK-421

Art No AK-421/HP

Standard Packing : 20 pcs. per ctn.

Horizontal Partition with single slot for Tote Bin AK-421

Art No AK-421/HP/S1

Standard Packing : 20 pcs. per ctn.

Vertical Partitions with three slots for Tote Bin AK-421

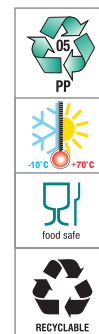
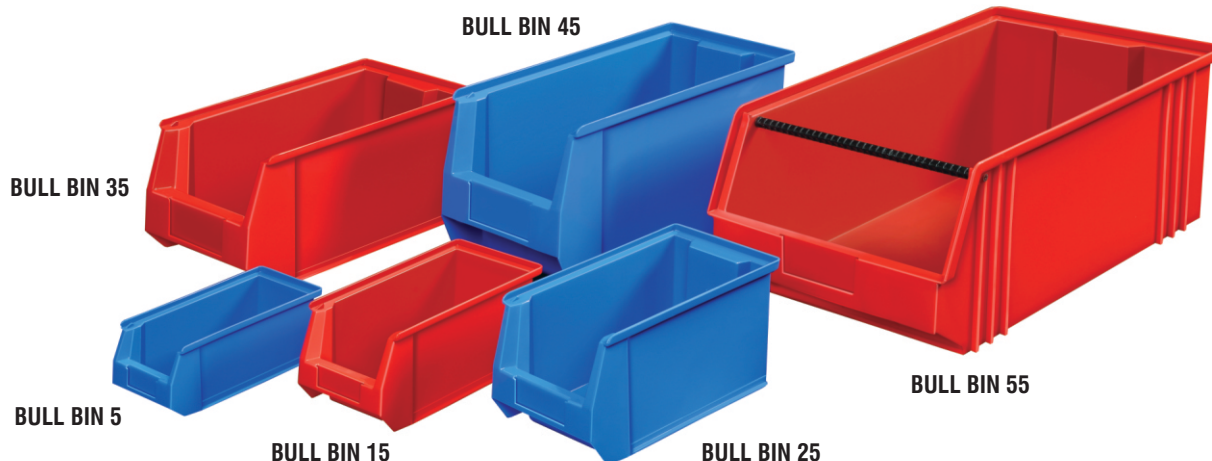
Art No AK-421/VP/S3

Standard Packing : 20 pcs. per ctn.

Horizontal Partition for Tote Bin AK-422

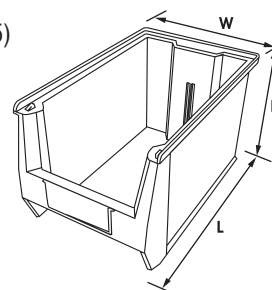
Art No AK-422/HP

Standard Packing : 20 pcs. per ctn.



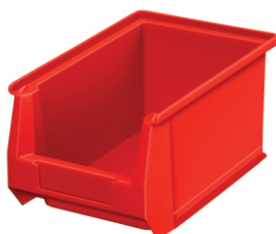
■ MADE FROM POLYPROPYLENE COPOLYMER.

- Provision for vertical partitions to increase storage options in Bull Bin 25, Bull Bin 35 & Bull Bin 45.
- Full length rear lip supports provided for hanging bins on Louvre Panels or Rails. (Except for Bull Bin 55)
- Resistant to most industrial solvents.
- Anti skid strips provided at the base.
- Bins are designed to stack one on top of each other.
- Extra wide stacking base for secure stacking.
- Tapered front & rear bottom for easy movement on conveyers.
- Stopper prevents stacked bins from shifting forward.
- Extra wide label slot for easy content identification.



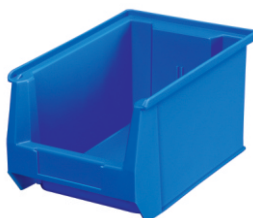
Art No : BIN 5

Outside Dimensions in mm : 168 (L) x 102 (W) x 74 (H)
 Inside Dimensions in mm : 145 (L) x 86 (W) x 66 (H)
 Effective Height in mm : 38
 Standard Packing : 60 pcs. per ctn.
 Volume Per Box CBM : 0.0801
 Slots for Partition : NA
 Colour : Red / Blue



Art No : BIN 15

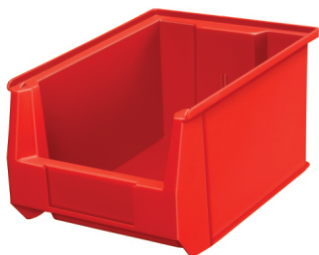
Outside Dimensions in mm : 201 (L) x 125 (W) x 101 (H)
 Inside Dimensions in mm : 178 (L) x 105 (W) x 92 (H)
 Effective Height in mm : 48
 Standard Packing : 40 pcs. per ctn.
 Volume Per Box CBM : 0.1056
 Slots for Partition : NA
 Colour : Red / Blue



Art No : BIN 25

Outside Dimensions in mm : 229 (L) x 150 (W) x 126 (H)
 Inside Dimensions in mm : 192 (L) x 128 (W) x 114 (H)
 Effective Height in mm : 58
 Standard Packing : 50 pcs. per ctn.
 Volume Per Box CBM : 0.2129
 Slots for Partition : 1 Slot for Vertical Partition.
 Colour : Red / Blue

All dimensions in mm approx.



Art No : **BIN 35**
 Outside Dimensions in mm : 300 (L) x 208 (W) x 158 (H)
 Inside Dimensions in mm : 255 (L) x 185 (W) x 145 (H)
 Effective Height in mm : 80
 Standard Packing : 20 pcs. per ctn..
 Volume Per Box CBM : 0.2087
 Slots for Partition : 1 Slot for Vertical Partition.
 Colour : Red / Blue



Art No : **BIN 45**
 Outside Dimensions in mm : 348 (L) x 210 (W) x 200 (H)
 Inside Dimensions in mm : 305 (L) x 187 (W) x 185 (H)
 Effective Height in mm : 110
 Standard Packing : 10 pcs. per ctn..
 Volume Per Box CBM : 0.1539
 Slots for Partition : 1 Slot for Vertical Partition.
 Colour : Red / Blue

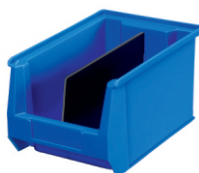


Art No : **BIN 55**
 Outside Dimensions in mm : 510 (L) x 310 (W) x 200 (H)
 Inside Dimensions in mm : 480 (L) x 280 (W) x 195 (H)
 Effective Height in mm : 85
 Standard Packing : 8 pcs. per ctn..
 Volume Per Box CBM : 0.2677
 Slots for Partition : NA
 Colour : Red / Blue

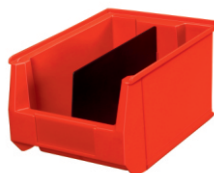
All dimensions in mm approx.

BULL BIN PARTITIONS

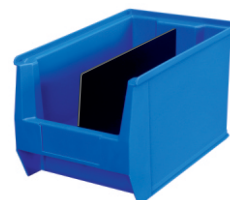
Other useful plastic accessories to match the Bull Bins range include Bin partitions.



Bull Bin 25 with 1 No of
VP BULL BIN 25
 Standard Packing :
 10 pcs. per ctn.



Bull Bin 35 with 1 No of
VP BULL BIN 35
 Standard Packing :
 10 pcs. per ctn.



Bull Bin 45 with 1 No of
VP BULL BIN 45
 Standard Packing :
 10 pcs. per ctn.



LP 3 Louvre Panel fitted with Bull Bins.

LOUVRE PANELS

Louvre Panels are made from 1.5mm (T) CRCA steel and powder coated in Light Grey RAL 7035 colour. BULL BINS can be mounted with ease in variable combinations as listed below :

Maximum No of bins per Louvre Panel				
Art No	LP 1	LP 2	LP 3	LP 6
SIZE	457 x 457	457 x 610	457 x 914	457 x 1829
BULL BIN 5	24	32	48	96
BULL BIN 15	12	15	24	48
BULL BIN 25	9	12	18	36
BULL BIN 35	4	6	10	20
BULL BIN 45	4	6	8	16

All dimensions in mm approx.

UNIVERSAL RAIL : AUR-1

Universal Rails are made from 1.5mm (T) CRCA Steel duly powder coated in Light Grey RAL 7035 colour and can be mounted on any surface like walls, benches, slotted angle systems, stands, and trolleys. These rails increase the flexibility of using different sizes of bins with ease and help in optimizing storage space.

Maximum No of Bins per Universal Rail					
ART NO	BULL BIN 5	BULL BIN 15	BULL BIN 25	BULL BIN 35	BULL BIN 45
No of Bins	9	7	6	4	4

The added feature of this rail is that when you use multiple rails one below each other from the second rail onwards the top part of the rails can be used as a support to the lower part of the bin mounted on the above rail and the bottom part of the rail can be used to mount the bin and so on, this helps in using lesser number of rails in the case when bins of height more than 130mm are used.

Art No : AUR -1

Dimension : 915mm (W) x 60mm (H)

Colour : Light Grey RAL 7035.



Bull Bins Mounted on Universal Rail **AUR 1**

LOUVRE PANEL STAND : FSS/C ▶

Free standing stands FSS/C are made from M. S. Steel Square Pipes of size 25mm (L) x 25mm (W) x 1.2mm (T) and are duly powder coated in Light Grey RAL 7035 colour. Stands are fitted with ergonomic plastic shoes for proper stability. These stands are used to mount louvre panels - LP 1, LP 2 or LP 3.

Louvres can be mounted on single side or both sides for dual use.

Art No.: FSS/C

Dimension : 457mm (W) X 630mm (D) X 1560mm (H)

Colour : Light Grey RAL 7035.



No of Louvre Panels per stand			
FSSS	LP 1	LP 2	LP 3
SINGLE	2	2	1
DOUBLE	4	4	2

FSS/C
Fitted with Louvre Panel
LP 3- 2 Nos (1 No on each side).



FSS/C
Fitted with Louvre Panel
LP 2- 4 Nos (2 Nos on each side).



FSS/C
Fitted with Louvre Panel
LP 6- 2 Nos (1 No on each side).

◀ LOUVRE PANEL STAND : FSS/LP6

Free standing stands FSS/LP6 are made from M. S. Steel Square pipes of size 25mm (L) x 25mm (W) x 1.2mm (T) and are duly powder coated in Light Grey RAL 7035 colour. Stands are fitted with ergonomic plastic shoes for proper stability. These stands are used to mount Louvre Panel LP 6 .

Louvres can be mounted on single side or both sides for dual use.

Art No : FSS/LP6

Dimension : 457mm (W) X 905mm (D) X 2160mm (H)

Colour : Light Grey RAL 7035.



SHOP FLOOR TROLLEY - SFT
Fitted with mixed Bull Bins on both the sides.

SHOP FLOOR TROLLEY : SFT ▶

Alkon Shop Floor Trolleys are made from M. S. Steel Rectangular Steel Pipes of size 20mm (L) x 40mm (W) x 1.2mm (T) and duly powder coated in Light Grey RAL 7035 colour. Trolleys can be used single sided or double sided as per requirement. Ideal for component storage and transfer to assembly or production areas. Unit comprises of base unit with aluminium checkered top plate fitted with castors and a frame on which two louvre panels of size LP 2 can be fitted on each side. Trolley has handles on both sides. It is packed in knock down condition.

Art No.: SFT

Dimension : 970mm (W) x 600mm (D) x 1100mm (H)

Colour : Light Grey RAL 7035.

Trolley without Louvre Panels and Bins.

(Order 2 Nos of LP 2 for single side use and 4 Nos of LP 2 for double side use separately).

ALKON TUFF SINGLE SIDED STAND : ATSSS ▶

These stands are made from M.S. Steel Rectangular Steel Pipes of size 25mm (L) x 50mm (W) x 1.6mm (T).

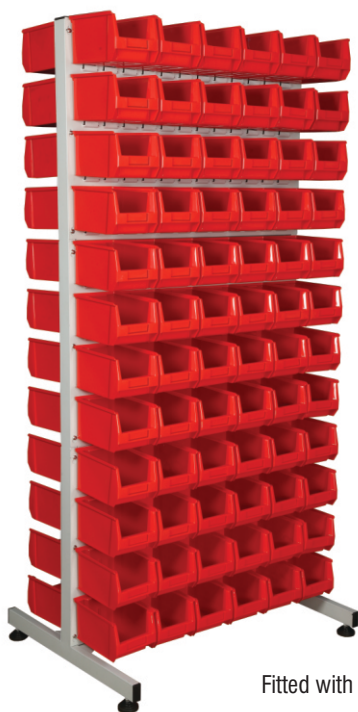
These stands are used to mount three panels of ATSLP 914 (W) X 610 (H) on single side.

Dimension : 915mm (W) x 550mm (D) x 1925mm (H)

Colour : Light Grey RAL 7035.

Maximum No of Bull Bins mounted on Alkon Tuff Stands & Trolley shown as below :

ART NO.	ALKON TUFF STAND		ALKON TUFF TROLLEY	
	Single Sided	Double Sided	Single Sided	Double Sided
BULL BIN 5	128	256	88	176
BULL BIN 15	112	224	77	154
BULL BIN 25	72	144	48	96
BULL BIN 35	40	80	28	56
BULL BIN 45	32	64	24	48



ATDSS Stand

Fitted with Bull Bin 25 on both the sides.

ALKON TUFF TROLLEY : ATTB ▶

Alkon Tuff Trolleys are made from M.S. Steel Rectangular Pipes of size 25mm (L)x 50mm (W) x 1.6mm (T) duly powder coated in Light Grey RAL 7035 colour. Trolley can be used single sided or double sided as per requirement. Each trolley comes fitted with ergonomic plastic handles so that the trolley can be comfortably moved. The trolley is fitted with heavy duty swivel castors that offer ease of movement. Two of the castors are braked, which means the trolley can be secured when not in use.

Art No : ATTB

Dimension : 995mm (W) x 700mm (D) x 1430mm (H)

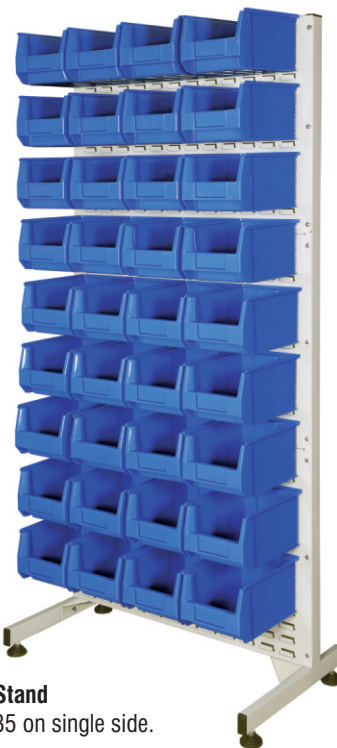
(Considering castor wheel extension width wise inclusive of handle)

Colour : Light Grey RAL 7035.

Trolley without louvre panels and bins.

(Order 2 Nos of ATSLP 914 (W) x 610 (H) for single side use and

4 Nos of ATSLP 914 (W) x 610 (H) for double side use separately).



ATSSS Stand

Fitted with Bull Bin 35 on single side.

◀ ALKON TUFF DOUBLE SIDED STAND : ATDSS

These stands are made from M.S. Steel Rectangular Pipes of size 25mm (L)x 50mm (W) x 1.6mm (T).

These stands are used to mount three panels of ATSLP 914 X 610 on each side.

Dimension : 915mm (W) x 700mm (D) x 1925mm (H)

Colour : Light Grey RAL 7035.



ATTB TROLLEY

Fitted with mixed Bull Bins on both the sides.

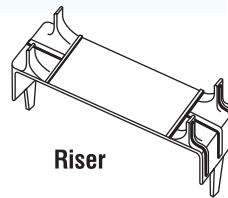
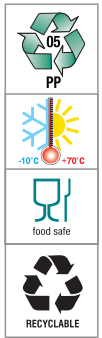


AM83M

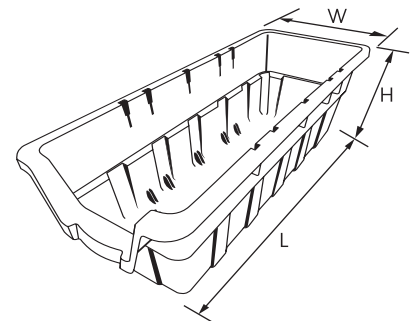
AM83S



Riser



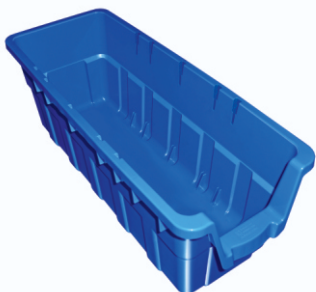
Riser



- Mammoth Bins are made from Polypropylene Co-polymer and are essentially made for storage of your large and bulky items or to store larger quantities of the same product in a warehouse or a distribution centre.
- Mammoth Bins are ideal for use on heavy-duty pallet racking systems fitted with mesh decking or decking panels on the beams or for use on extra deep shelving units.
- Mammoth Bins make picking of products in the warehouse more efficient by having more product available to the order picker.
- Mammoth Bins are available with a Solid Base Art No. AM83S or with a Mesh Base Art No. AM83M.
- Mammoth bins with the Solid Base are used for storage of products which may be liquid based or where the size of the product is very small and need to be contained within the bin.
- Mammoth Bins with the Mesh Base facilitates water to pass through in a warehouse fitted with a sprinkler system and helps to meet fire safety compliance in a warehouse or workplace. In this way water is not accumulating in the bin and passes through to lower levels.
- Mammoth Bins have a large front opening for easy access of the products stored in the bin and for good product visibility.
- Mammoth Bins have an ergonomically designed handle which allows the bin to slide in and out of the racking system helping warehouse employees to pick orders more safely and efficiently.
- Both Solid Base and Mesh Base Mammoth Bins have a reinforced base for added strength and load bearing.
- Mammoth Bins have a large flat front face for adhering standard identification labels.
- Mammoth Bins have lockable provisions made in the bin itself to be used with horizontal partitions in such a way that the bin can be divided into two compartments with the use of one partition, three compartments with the use of two partitions or four compartments with the use of three partitions. The partitions lock into the sidewalls but are removable if required to alter the space within the bin itself.
- Mammoth Bins can also be stacked on top of each other using three ergonomically designed risers which fit in the partition slots provided in the bin. This allows the bins to be used more efficiently with longer items. We recommend stacking the bins to a maximum of 3 high. When the bins are double stacked they can hold 15 kgs UDL per bin and when the bins are three stacked then they can hold 10 kgs UDL per bin.
- Mammoth Bins are designed to nest inside one and other to save space when storing the bins and during transportation of the bins. By nesting the space saved is more than 70 % during transportation which makes the movement of these bins more economical in comparison to stacking bins which do not nest.

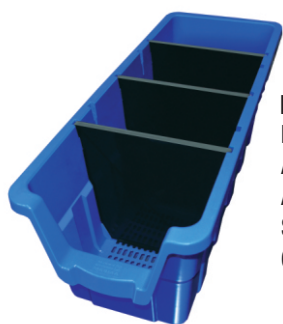


Art No	: AM83M
Outside Dimensions in mm	: 820 (L) x 315 (W) x 300 (H)
Inside Dimensions in mm	: 740 (L) x 250 (W) x 290 (H)
Effective Height in mm	: 175
Standard Packing	: 8 pcs. per ctn.
Volume Per Box CBM	: 0.209
Slots for Partition	: 5
Colour	: Blue



Art No	: AM83S
Outside Dimensions in mm	: 820 (L) x 315 (W) x 300 (H)
Inside Dimensions in mm	: 740 (L) x 250 (W) x 290 (H)
Effective Height in mm	: 175
Standard Packing	: 8 pcs. per ctn.
Volume Per Box CBM	: 0.209
Slots for Partition	: 5
Colour	: Blue

All dimensions in mm approx.

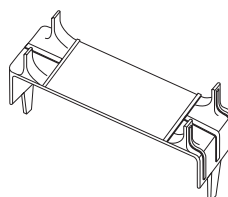


Partition
Horizontal Partition for
AM83S & AM83M
Art No.: HP AM83
Standard Pkg. : 16 pcs per ctn.
Colour : Black

**AM83M
with 3 Partitions**



Riser
Riser for AM83S & AM83M
Art No.: AM83 R
Standard Pkg. : 12 pcs per ctn.
Colour : Black



**AM83S
with 3 Risers**



Nesting



Mammoth Bin Fitted with
Horizontal Partition

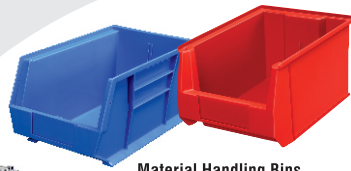


Mammoth Bin Fitted with Riser

Efficient storage, space optimization, ergonomic & innovative storage solutions.



Roo Tilt Bin
Rotary Stands



Material Handling Bins



Multi & Modular
Systems



Filing
Systems



Component
Organisers



Panda Shelving Systems



Rack Protectors
& Deflectors



Floor
Gratings



ALKON PLASTICS PVT. LTD.

- 📍 Regd. Office : 801, Embassy Chamber, 3rd Road, Khar (W),
Mumbai - 400 052, Maharashtra, INDIA.
- ☎ Tel.: 0091- 22- 6501 2010, 2086 6030.
- ✉ E mail : sales@alkonplastics.com
- 🌐 Website : www.alkonplastics.com

This Catalog should not be reproduced as it is covered under Copyright Act.

